

RAPIX
EMERGENCY

RAPIX DALI-2 Intelligent DALI-2 Emergency Lighting Monitoring System



One Click Commissioning

Technical Overview Guide

February 2024



Engineered by
ozuno

sales@ozuno.com

www.ozuno.com



RAPIX Emergency



Introducing the RAPIX intelligent
DALI Emergency lighting solution
with **One Click Commissioning**

Total integration with DALI lighting systems

Intuitive ONE CLICK commissioning solution

Simple to use software & hardware components

Scalable solution for any size project

RAPIX Emergency ensures the safety and integrity of your
emergency system with its revolutionary automated
monitoring and reporting solution.





**RAPIX Emergency integrates easily
with your DALI lighting system.**

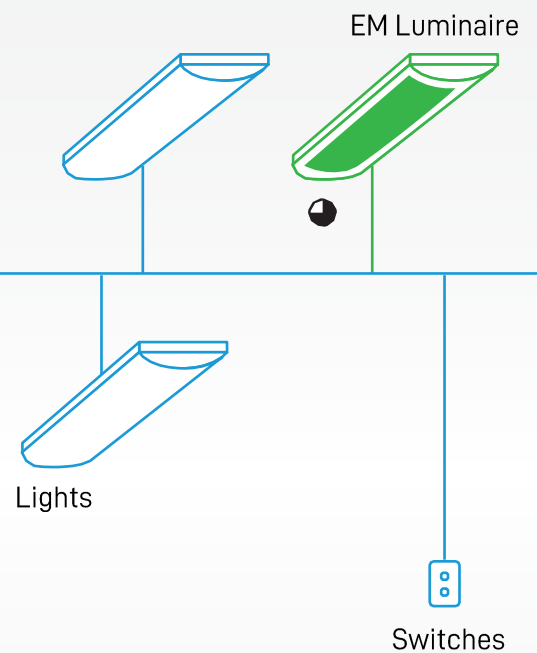
**DALI is the global standard
protocol for lighting control.**

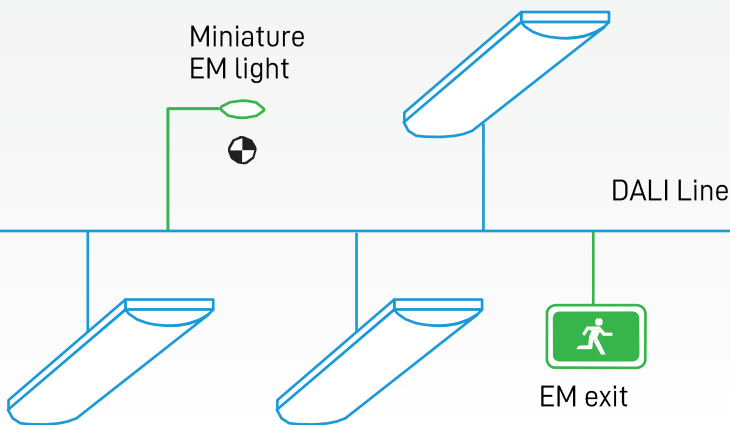


DALI Line

DALI components make it possible to create a flexible, cost-effective and decentralised lighting system. DALI deals only with lighting system components. This limitation is not a disadvantage; it simplifies planning and installation.

DALI is simpler than building management systems and less expensive. Interfaces and converters can combine DALI components with any building management system; DALI can function as a stand-alone system or as a subsystem.





RAPIX
EMERGENCY

RAPIX Emergency is a monitored emergency system that easily integrates with DALI on the same lighting network, or on a dedicated DALI emergency network



RAPIX Emergency software runs on a PC with Windows™ 10 or Server editions.



RAPIX Ethernet to DALI interface device and RAPIX DALI power supply



RAPIX Zone Controller



The complete piece of mind DALI emergency software solution.

RAPIX Emergency is a complete emergency monitoring solution that is simple to use, provides ease of operation and ensures compliance obligations are fulfilled.





ONE CLICK Commissioning

Identify, activate & monitor your system automatically.



Groups Fixtures

Identifies fixtures on the network and creates test groups using intelligent patented algorithms.



Sets Maintenance Schedule

Automatically schedules tests and detects schedule conflicts to ensure best practice.



Generates Reports

Reports on all passed or failed devices with the type of failure and sends an alert to your contacts.



Complies with Standards

Automated compliance testing ensures your emergency lighting system meets current standards.



Our user friendly dashboards giving you full system control.



CONFIGURATION MODE

Set up, configure, customise and automate test plans.

Scheduled Tests

Create schedules for duration and function tests. Set their frequency and next run dates.

Email Settings

Email alerts for when the test plan is being run and at completion of test.

Contact Information

Set up emergency contact information of key personnel.

Go to Run Mode

Execute the test plan.

Search & find
DALI lines and DALI devices by a live text filter.

RAPIX Integrator

Quickly and easily load a RAPIX Integrator Project.

Discover NEW DALI interfaces

Scan for Ethernet DALI interface devices and emergency DALI devices.

Discover ALL NEW Devices

Organise emergency DALI devices into test groups. Identify emergency DALI devices and give them meaningful names.



RUN MODE

Activate, monitor, and run function test plans.



Test PDF reports email automatically

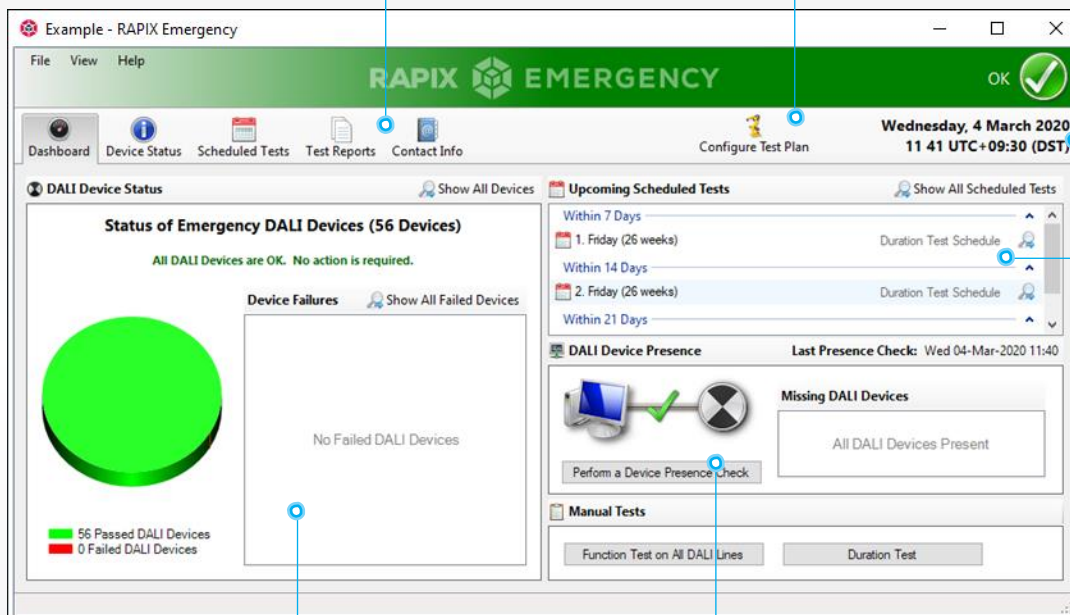
Reminder emails 1 day or 1 week prior to a duration test. Weekly reminder emails, if there are failed DALI devices that remain unfixed.

Re-configure a test plan

Exits the current test plan mode to modify or create a new test plan.

Current date & time

Always shows the current date, time and time zone for the site location.



Dashboard

Visual graphics showing devices that passed or failed the test. Breakdown of failures by lamp or battery type.

Overall test plan status

Green if ALL devices in the test plan are OK. Red is ANY device in the test plan is not OK. Blue if a test is currently being run.



Device Presence Check

Runs a weekly or on demand check to detect any missing DALI devices.

Scheduled tests

Show future schedule of ON-DEMAND and PERIODICAL tests on emergency DALI devices.



Complete automated reporting for simple & efficient maintenance management.



TEST REPORTING

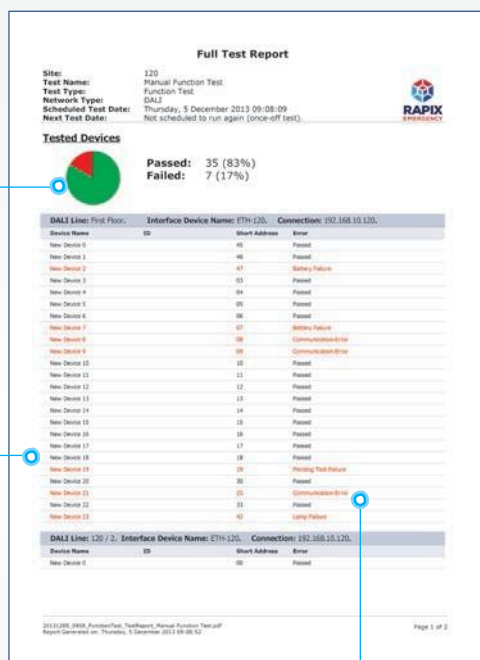
Automatic generation of PDF reports.

Full Test Report

Reports are generated via test schedules or on demand.

Pie Chart

Represents the number of passed and failed device



DALI Device info

Each row represents a DALI device, grouped by DALI lines.

Pass or Fail

Failed devices are highlighted in red with the error information.

Repair Report

Reports can be automatically emailed to the appropriate maintenance contacts.



Maintenance Section

With area for building maintenance to log work details.

Supervisor sign-off

Allows for completed work to be signed off.

Repair Schedule

A summary of all failed DALI Devices.

Failure Mode

Failed devices are highlighted in red with the error information.



AUTO EMAIL

Reports delivered electronically.

Email Control

Automatic functions save time and can be actioned faster.

Example - RAPIX Emergency (Configuration Mode)

File View Tools Help

RAPIX EMERGENCY

DALI Lines Scheduled Tests Email Settings Contact Info Auto-build Schedules Go to Run Mode

Tuesday, 17 March 2020 14:25 UTC+09:30 (DST)

Email Sending Details

Sender Information

Email Address: rapixemergency@companyname.com

Server Information

Relay Host: ex1234.companyname.com

Port Number: 25

Logon Information (optional)

Username:

Password:

Test These Settings

Send Test Email...

List of Email Recipients

+ Add Recipient - Remove Recipient

Recipient Name	Recipient Email Address	Valid
Joe Bloggs	joe@companyname.com	OK
John Smith	john@companyname.com	OK

Email Notification Options

An email will be sent to each recipient in the list, notifying them that a test has been performed.

☒ Send email 1 week prior to Duration Tests being run

☒ Send email 1 day prior to Duration Tests being run

☐ Send email weekly if there are failed Emergency DALI Devices

All emails will have PDF test reports attached. CSV test report attachments are optional.

☐ Generate and attach test reports in CSV format

Multiple Recipients

Setup a list of recipients who must be advised of test results.

Test Email

Send a test email to ensure delivery to your recipients is established and can be confirmed.

Notification options

- 1 WEEK prior to duration test run
- 1 DAY prior to duration test run
- 1 WEEK reminder regarding failed devices.

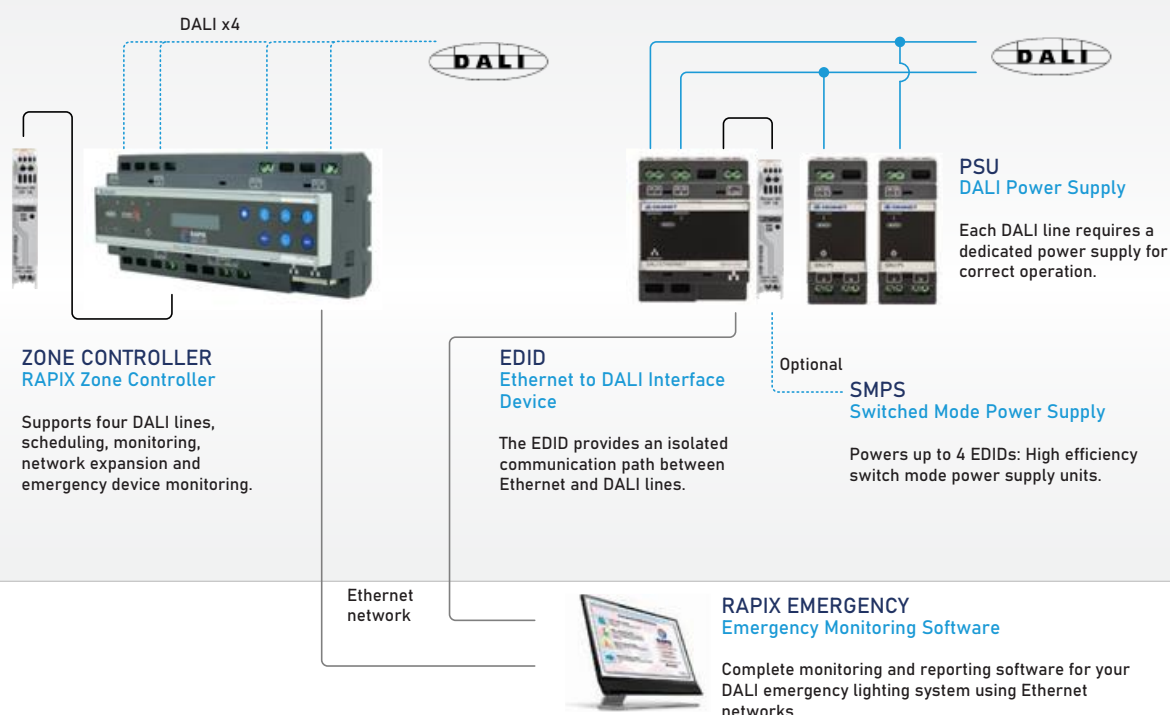
Auto Notification

Results of scheduled tests are automatically emailed in PDF format.



RAPIX Emergency is totally scalable for small, medium and large installations.

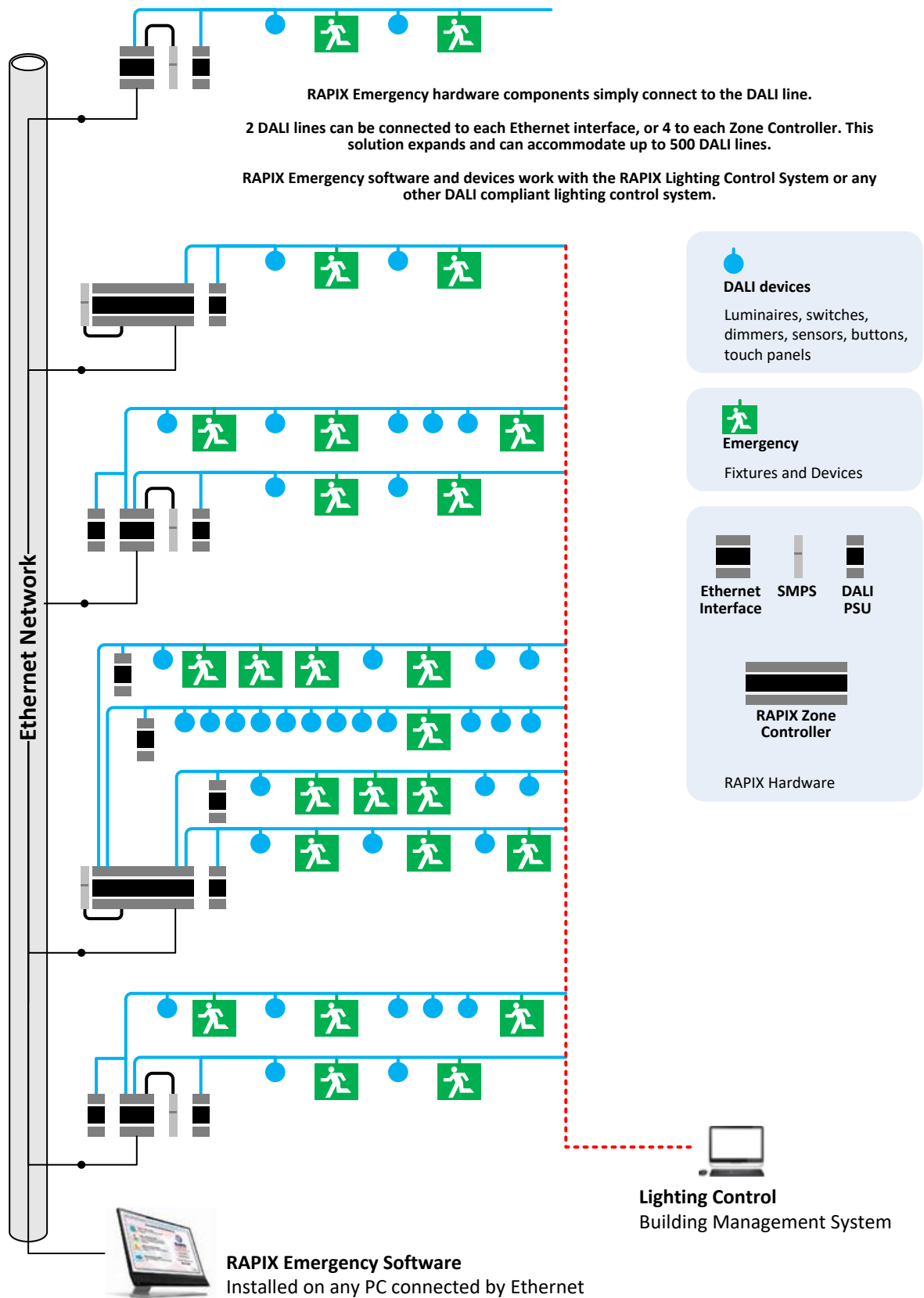
Simple hardware components from Ozuno can be easily used in any installation for a reliable and stable emergency lighting system. Optional PSUs can be added if the DALI lighting control system does not supply DALI line power.



RAPIX Emergency supports systems using the RAPIX Ethernet Interface – typically on mixed installations with gateways to other systems.

RAPIX Emergency also supports the RAPIX Lighting Control system through RAPIX Zone Controllers, and naturally a mix of the two interface types can also be used.

The one solution for all sizes.



Ozuno LED Emergency drivers.

Optimised LED drivers and emergency conversion units to complete your RAPIX emergency solution.

High performance DALI Emergency LED drivers and Emergency Conversion Units, drive emergency lighting LEDs or arrays when the normal mains AC power has failed.



Fully Compliant

All DALI features are fully supported and officially compliant.



Multiple Battery Types

Versions suitable for Li-Ion, NiMH and NiCd battery types.



Rated Duration

Different durations can be pre-set at the factory for local standards.
Example – 1 hr, 2 hrs, 3 hrs, 4 hrs or greater.



Single Plug

One single battery plug ensures simpler installation.



No Jumpers

Automatically detects operating conditions.



LED Driver & Conversion Module capabilities

Logging data on vital battery operating statistics.
Logging data on vital unit operating statistics.
In-service firmware upgradable.

Factory Configuration

LED drivers can be configured to suit any of the compatible battery types with a specific rated duration time to suit local regulations.

Compatible Batteries

NiMH	Nickel Metal Hydride
NiCd	Nickel Cadmium
LiFePO4	Lithium Ferro Phosphate



Discover the Xi advantage,
a new layer of DALI extended intelligence.

Xi-extended intelligence is the next generation layer of digital intelligence. It provides advanced features and functionality for both hardware and software, learn more at <https://ozuno.com>

RAPIX Emergency

A key member of the Ozuno RAPIX trio: the total commissioning software solution with State of the Art simplicity.

Learn more at <https://ozuno.com>



RAPIX
ADDRESSING

DALI Short Addressing
Award Winning Solution.
Fast. Simple. Mobile.



RAPIX
EMERGENCY

Intelligent Emergency
Monitoring System with
One Click Commissioning.



RAPIX
INTEGRATOR

Complete DALI configuration
Smarter. Easier. Intuitive.



RAPIX

LIGHTING CONTROL SYSTEM

Contact Us

 sales@ozuno.com

 www.ozuno.com



ozuno



Version 3 February 2024
Copyright © Ozuno Holdings Pty Ltd