

Introduction

This Application Note describes the use of “Master Configurations” in a RAPIX Lighting Control System.

A Master Configuration is a DALI unit configuration that can be re-used throughout a project.

For example, in a commercial building, there may be many occupancy sensors with one of three basic configurations:

1. Corridor Sensors
2. Meeting Room Sensors
3. Office Sensors

Each of these configurations is a “Master Configuration” and is applied to each of the sensors in the building according to where they are used.

A unit that has had a Master Configuration applied to it is known as a “linked unit”.

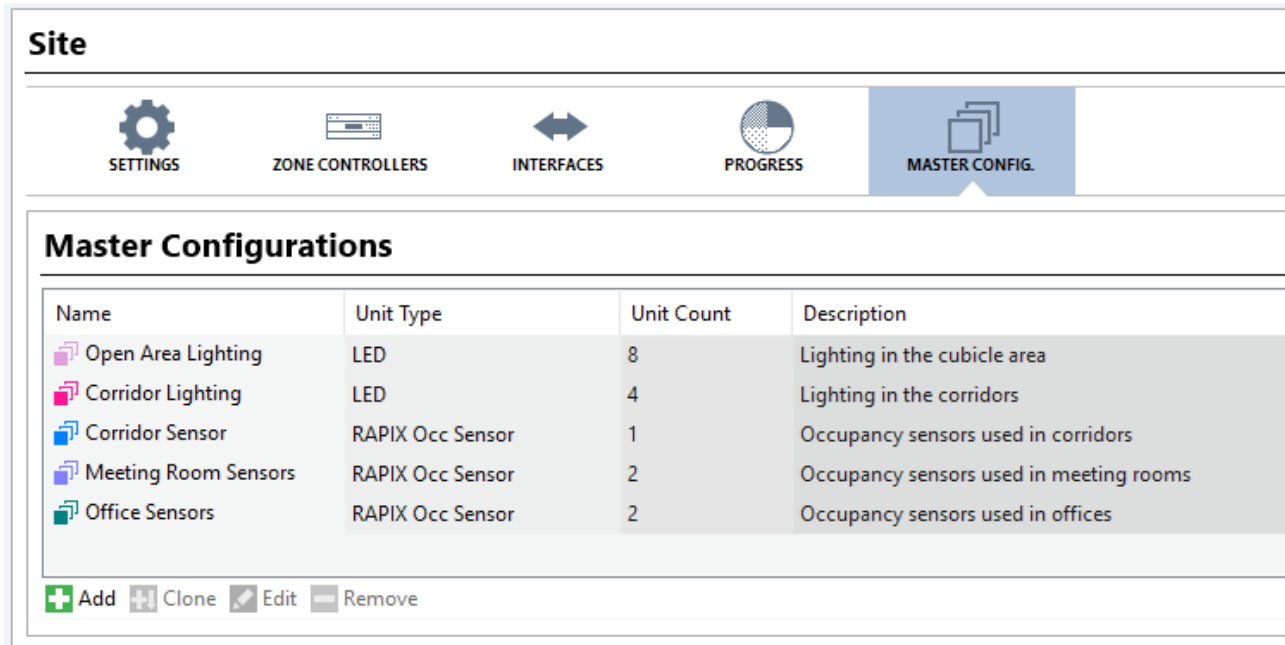
The advantages of using Master Configurations are:

1. Each configuration only needs to be defined once.
2. In RAPIX Integrator, it is easy to see at a glance how the units are configured.
3. If a change needs to be made to all units of the same type in a site, it only needs to be done to the Master Configuration, then the changes are automatically applied to all units that use the Master Configuration.
4. It is less likely that mistakes will be made due to reduced need to repeatedly enter data.

The use of Master Configurations can significantly reduce the time needed to commission a large site.

Creating and Viewing Master Configurations

Master Configurations can be created and viewed on the **Master Config** tab:

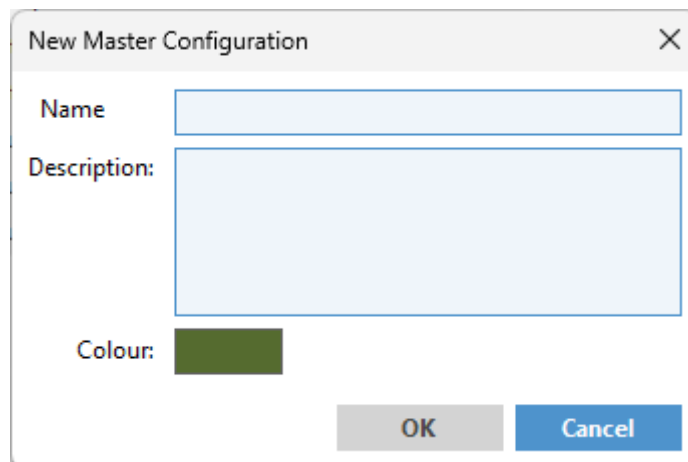


Name	Unit Type	Unit Count	Description
Open Area Lighting	LED	8	Lighting in the cubicle area
Corridor Lighting	LED	4	Lighting in the corridors
Corridor Sensor	RAPIX Occ Sensor	1	Occupancy sensors used in corridors
Meeting Room Sensors	RAPIX Occ Sensor	2	Occupancy sensors used in meeting rooms
Office Sensors	RAPIX Occ Sensor	2	Occupancy sensors used in offices

The Master Configuration tab

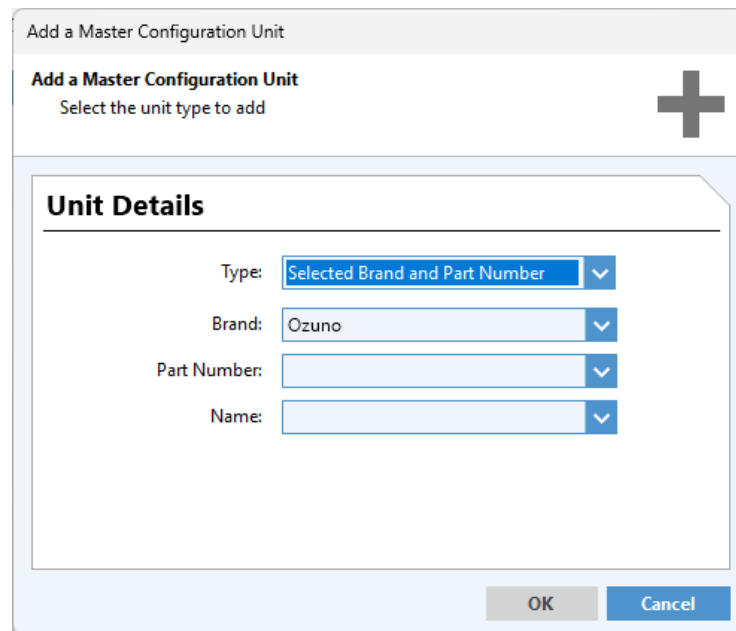
To add a new Master Configuration:

1. Click on the **Add** button.
2. The **New Master Configuration** form will be shown:



The New Master Configuration form

3. Enter a name and description.
4. To change the colour, click on the colour swatch and select a new colour.
5. Click on **OK**.
6. The **Add a Master Configuration Unit** form will be shown:



Add a Master Configuration Unit

Add a Master Configuration Unit
Select the unit type to add

Unit Details

Type: Selected Brand and Part Number

Brand: Ozuno

Part Number:

Name:

OK Cancel

The Add a Master Configuration Unit form

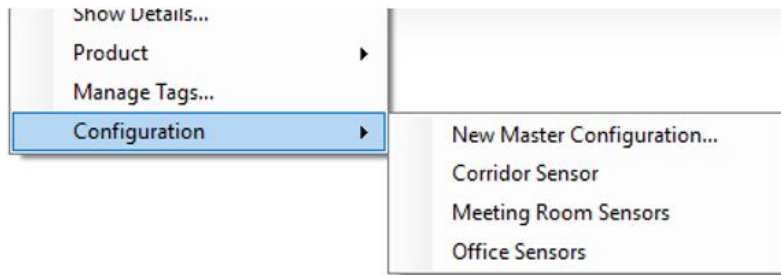
7. Select the unit type and details (if applicable).
8. Click on **OK**.
9. Edit the Master Configuration properties in the same way as editing any other unit.
 - a. Rapix Input Units: It is not necessary to select Zone or Scenes as these are not part of the Master Configuration – they will be different for every unit.
 - b. Output Units: It is not necessary to select Groups or Scenes as these are not part of the Master Configuration – they will be different for every unit.
10. Click on **OK**.
11. The new Master Configuration will appear in the list.

Applying Master Configurations

Pop-up Menu

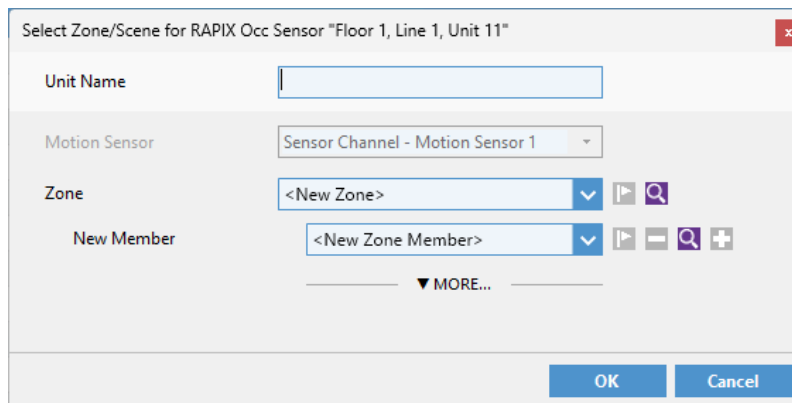
To apply a Master Configuration to a unit:

1. Right-click on the unit in the Addressing tab unit list.
2. Select **Configuration**, then the required Master Configuration. Note that only the Master Configurations that are compatible with the unit are listed.



Right-click pop-up menu selecting a Master Configuration

3. A form may be shown to allow selection of the controlled Zones or Scenes:



The Select Zone/Scene form

Master configurations can be added to multiple units at once:

1. Select multiple units with **CTRL + click** or **SHIFT + click**.
2. Right-click on one of the selected units.
3. Select **Configuration**, then the required Master Configuration. Note that only the Master Configurations that are compatible with all selected units can be selected.
4. For each unit, a form may be shown to allow selection of the controlled Zones or Scenes.

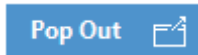
To remove the Master Configuration from a unit:

1. Right-click on the unit in the Addressing tab unit list.
2. Select **Configuration**, then the selected Master Configuration.

Drag and Drop

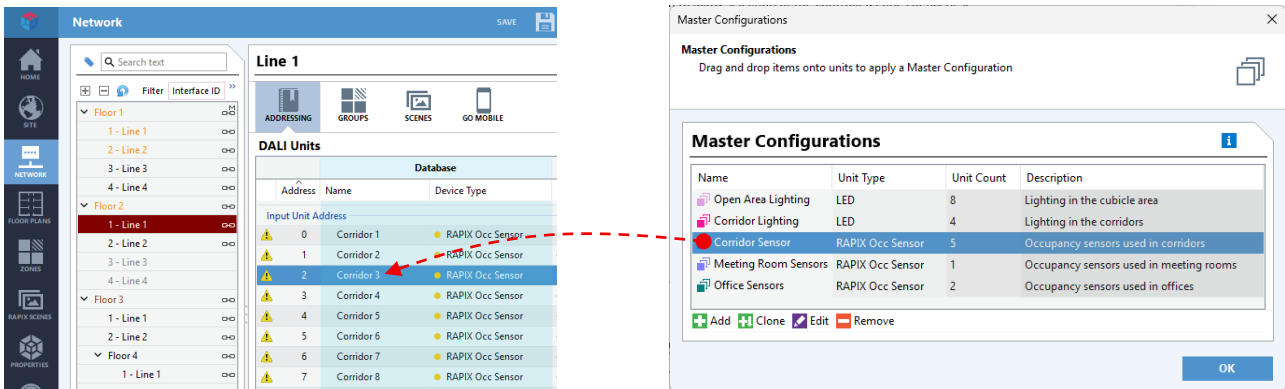
The second way to apply Master Configurations is using drag and drop:

1. On the Master Configuration tab, click the **Pop Out** button:



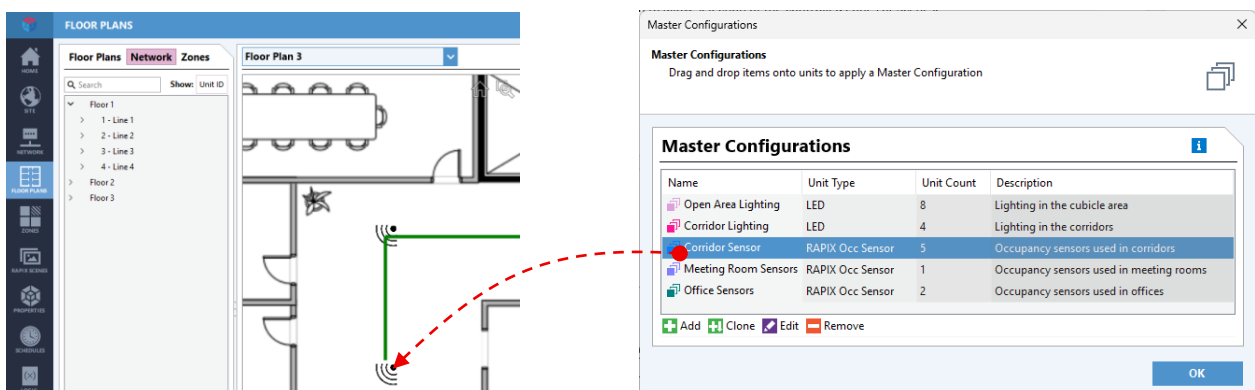
The pop-out button

2. The **Master Configurations** form will be displayed.
3. On the main form, select the addressing tab.
4. Click and drag a Master Configuration from the Master Configurations form and drop it onto the required unit in the list.



Dragging and dropping a Master Configuration onto a unit in the list

It is also possible to drag and drop a Master Configuration onto a floor plan device symbol.



Dragging and dropping a Master Configuration onto a floor plan

Copy and Paste

The third way to apply Master Configurations is using copy and paste:

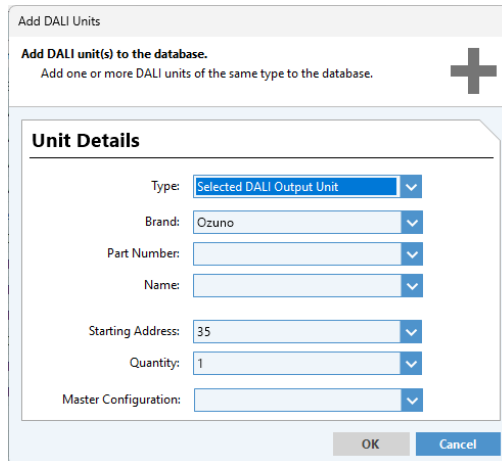
1. Copy the Master Configuration:
 - Right-click on the Master Configuration and select **Copy**; or
 - Select the Master Configuration and copy using **CTRL+C**.
2. Paste the Master Configuration:
 - Select one or more units to have the Master Configuration applied.
 - Right-click and select **Paste**, or press **CTRL+V**.

A Master Configuration can be pasted onto a unit in the DALI Units list, or a unit floor plan symbol.

Adding a new unit with a Master Configuration

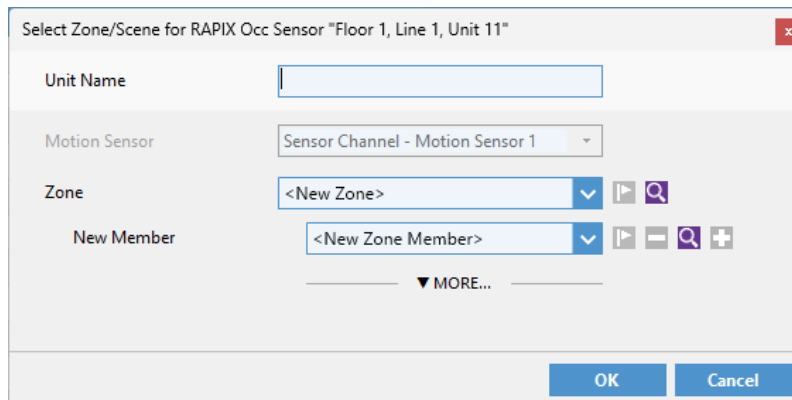
To add a unit and apply a Master Configuration at the same time:

1. Select the required DALI Line.
2. Click on the Add button
3. The Add DALI Units form will be shown.



The Add DALI Units form

4. Select the required unit type and quantity.
5. Select the Master Configuration from the drop-down list.
6. Click on **OK**.
7. For each unit being added, the **Select Zone/Scene** form will be shown.



The Select Zone/Scene form

8. Enter a unit name.
9. Select the Zone or Scene.
10. Click on **OK**.

Viewing which units use a Master Configuration (i.e. “linked units”)

In the addressing tab, there will be an icon next to units that have had a Master Configuration applied.

Hover the mouse over the icon to find the name of the Master Configuration.

Line 1

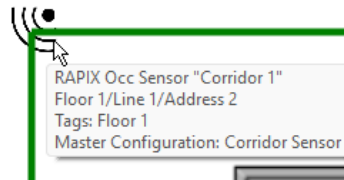
ADDRESSING GROUPS SCENES GO MOBILE

DALI Units

Database		
Address	Name	Device Type
Input Unit Address		
0	Corridor 1	● RAPIX Occ Sensor
1	Corridor 2	● RAPIX Occ Sensor
2	Corridor 3	● RAPIX Occ Sensor
3	Meeting Room 1	● RAPIX Occ Sensor
4	Office 1	● RAPIX Occ Sensor
5	Office 2	● RAPIX Occ Sensor

Master Configuration icons

On the floor plans, the unit symbol pop-up hint shows the name of the Master Configuration:



Floor plan pop-up hint

Updating Master Configurations

To edit the details of a Master Configuration:

1. Either
 - a. Select the Master Configuration in the list, then click the **Edit** button; or
 - b. Double-click on the Master Configuration.
2. The **Master Configuration** form will be shown. The type of form displayed depends on the unit type.
3. Change the Master Configuration name, description and/or colour if required.
4. Edit the Master Configuration properties in the same way as editing any other unit.
 - a. Rapix Input Units: It is not necessary to select Zone or Scenes as these are not part of the Master Configuration – they will be different for every unit.
 - b. Output Units: It is not necessary to select Groups or Scenes as these are not part of the Master Configuration – they will be different for every unit.
5. Click on **OK** when finished.
6. The **Transfer Programming** selection form will be displayed. Select the required option:
 - **Now**: The unit database and live configuration will be updated.
 - **Later**: Only the unit database will be updated. To update the live devices, a sync from database to live will be required at a later time.

Limitations

Most aspects of a Master Configuration can be changed, and the changes will be applied to all linked units. For example, you can:

- Change template properties (e.g. motion sensor time-out).
- Change from one template to a similar template (e.g. change “Motion Sensor” to “Motion Sensor (Advanced)”).
- Add, edit or remove disable rules.
- Change unit settings (e.g. indicators).

However, it is not possible to make major changes to what the template controls. In particular, the number of zones and scenes controlled by the templates cannot be increased, as it is not possible to automatically update the linked units.

Change History

Rev	Date	Updated By	Comment
1	25 May 2026	DS	First Release
2	2 Jun 2026	DS	Added details of usage with floor plans

Contact Information

Web www.ozuno.com
All Enquiries +61 8 8362 7584 sales@ozuno.com

Ozuno Trading Pty Ltd

ABN: 96 621 194 483

RAPIX is a trademark of Ozuno Holdings Pty Ltd.

DALI and **DALI-2** are trademarks of the Digital Illumination Interface Alliance (DiiA).

COPYRIGHT © 2026 This document is copyright by Ozuno Holdings Pty Ltd. Except as permitted under relevant law, no part of this application note may be reproduced by any process without written permission of and acknowledgement to Ozuno.

DISCLAIMER. Ozuno Holdings Pty Ltd (Ozuno) reserves the right to alter the specifications, designs or other features of any items and to discontinue any items at any time without notice and without liability. While every effort is made to ensure that all information in this application note is correct, no warranty of accuracy is given and Ozuno shall not be liable for any error.

TRADEMARKS. The identified trademarks and copyrights are the property of Ozuno Holdings Pty Ltd unless otherwise noted.

APN-RAPIX-036 June 2026