

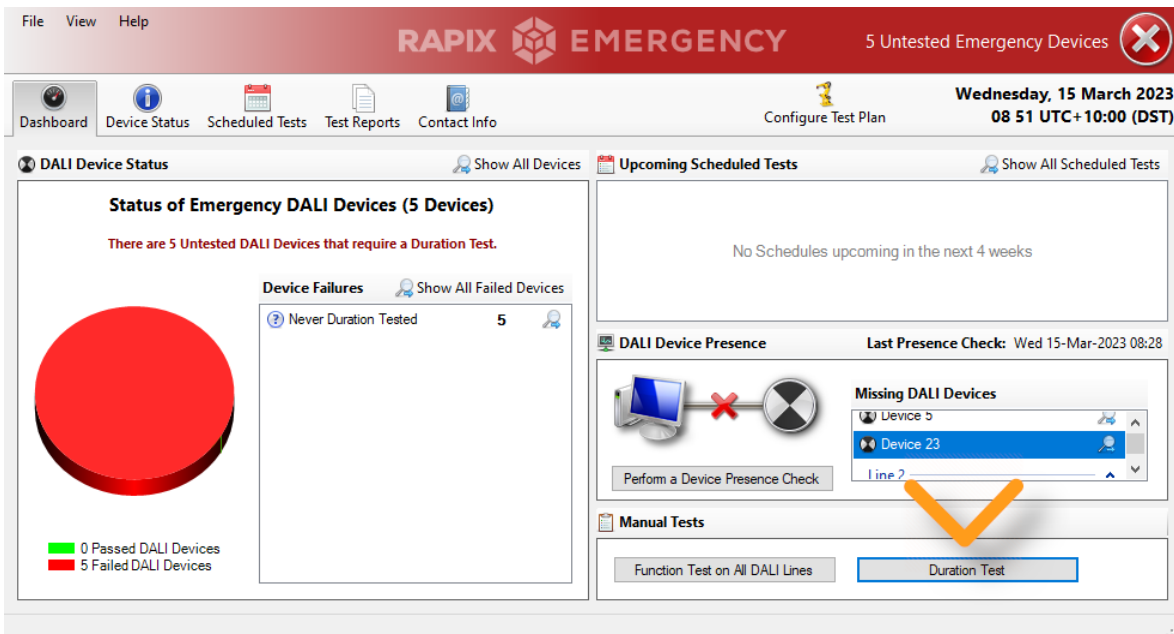
1 Overview

This document describes how to perform an emergency duration test using the RAPIX Emergency software.

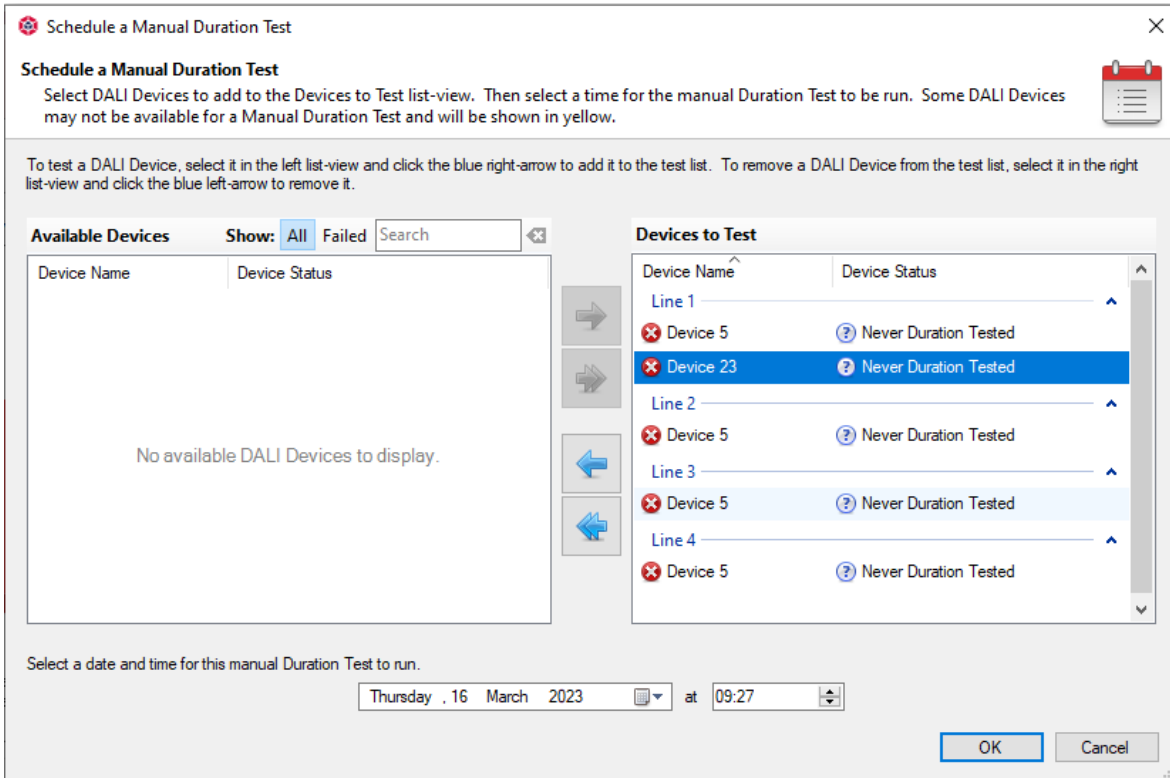
2 Walkthrough

Please ensure your RAPIX emergency software is up to date. Current versions of our software can be downloaded directly from our website: <https://ozuno.com/dl/rapix-software/>

On the run page Dashboard click the **Duration Test** button



Enter your password in the pop-up window that appears. This will take you to the **Schedule a Manual Duration Test** window.



There are two boxes in this window.

The right box is labeled **Devices to Test**. When you are scheduling a duration test, all devices listed in this window will be included in the test.

The left box is labeled **Available Devices**. All devices in the system available for duration testing will be listed in this box.

To include a device in the test, select the device in the **Available Devices** box, and then hit the single right arrow in between the two boxes to shift the device into the **Devices to Test** box.



To remove a device from the test, select the device in the **Devices to Test** box, and then hit the single left arrow in between the two boxes to shift the device into the **Available Devices** box.



By default, all devices which require testing will automatically be placed in the **Devices to Test** box when the window is first opened.

To quickly move all devices into the **Devices to Test** box from the **Available Devices** box, hit the double right arrow button between the two boxes.

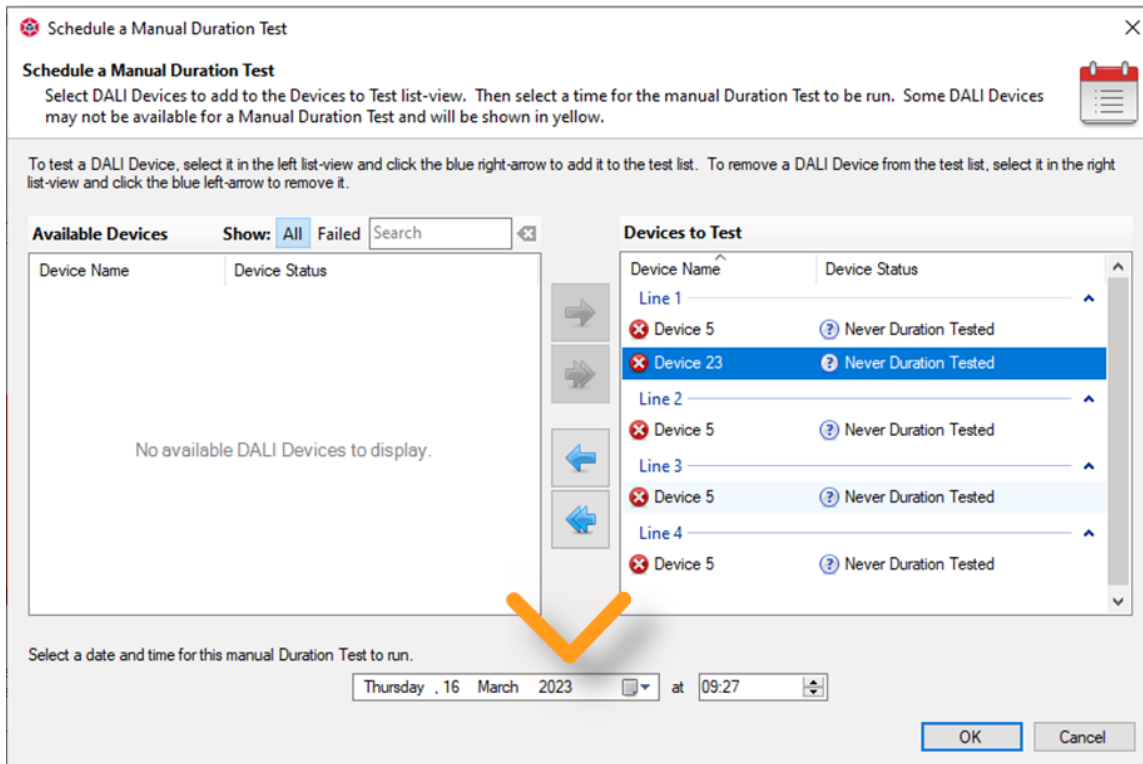


To remove all devices from the **Devices to Test** box, hit the double left arrow button between the two boxes. Doing this will place all devices into the **Available Devices** box.

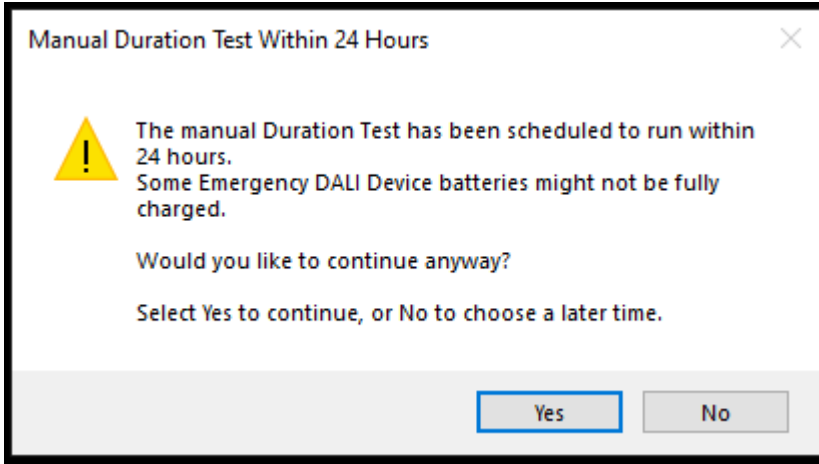


Once you have added all devices you wish to test to the Devices to Test box you must select a date and time for the scheduled test.

Enter the required date and time for your discharge test in the selection box at the bottom of the window, then click ok.

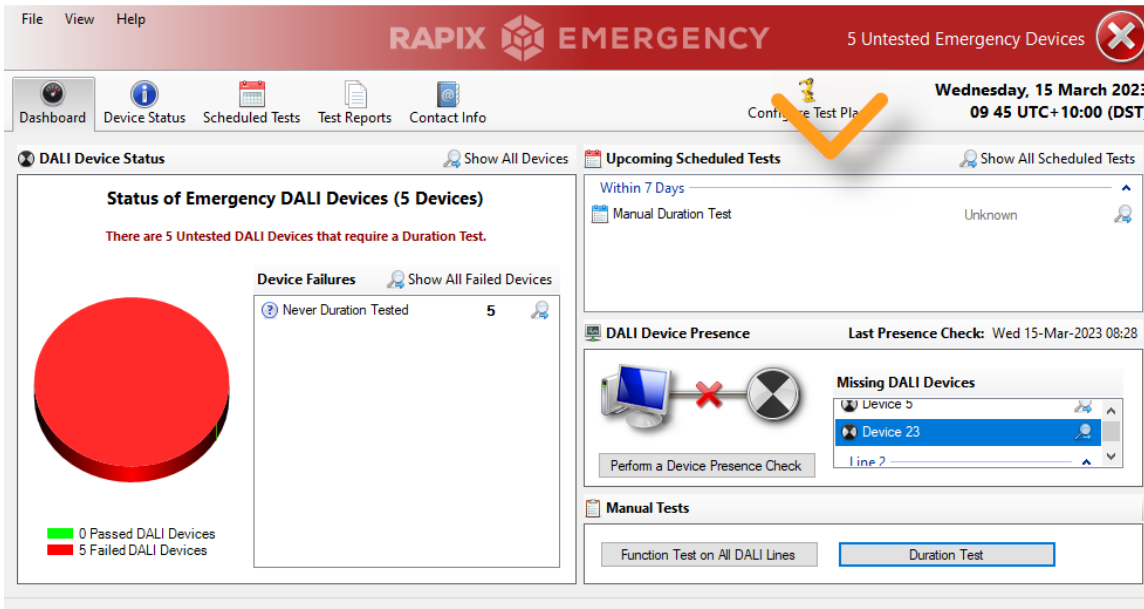


Please note: By default, RAPIX emergency will suggest a time 24hrs in the future. You can select a time sooner than that, but you will receive the following warning:



If you still wish to proceed with the selected date and time, click yes.

The test should now be added to your test schedule. Which is displayed on the RAPIX Emergency dashboard.



Please Note: The RAPIX emergency software must remain open and connected to the system for the emergency duration test to be performed.



Once the **Duration Test** has been completed, test results will be available in the **Test Reports** tab of the RAPIX Emergency software. If automatic report emailing has been set up, the reports should also be emailed out to the listed recipients.

For more information on RAPIX Emergency, please go to our website: www.ozuno.com

Change History

Rev	Date	Updated By	Comment
1	16 Mar 2023	M Y	First Release

Contact Information

Web www.ozuno.com
All Enquiries +61 8 8362 7584 sales@ozuno.com

Ozuno Trading Pty Ltd

ABN: 96 621 194 483

RAPIX is a trademark of Ozuno Holdings Pty Ltd.

DALI and **DALI-2** are trademarks of the Digital Illumination Interface Alliance (DiiA).

COPYRIGHT © 2023 This document is copyright by Ozuno Holdings Pty Ltd. Except as permitted under relevant law, no part of this application note may be reproduced by any process without written permission of and acknowledgement to Ozuno.

DISCLAIMER. Ozuno Holdings Pty Ltd (Ozuno) reserves the right to alter the specifications, designs or other features of any items and to discontinue any items at any time without notice and without liability. While every effort is made to ensure that all information in this application note is correct, no warranty of accuracy is given and Ozuno shall not be liable for any error.

TRADEMARKS. The identified trademarks and copyrights are the property of Ozuno Holdings Pty Ltd unless otherwise noted.